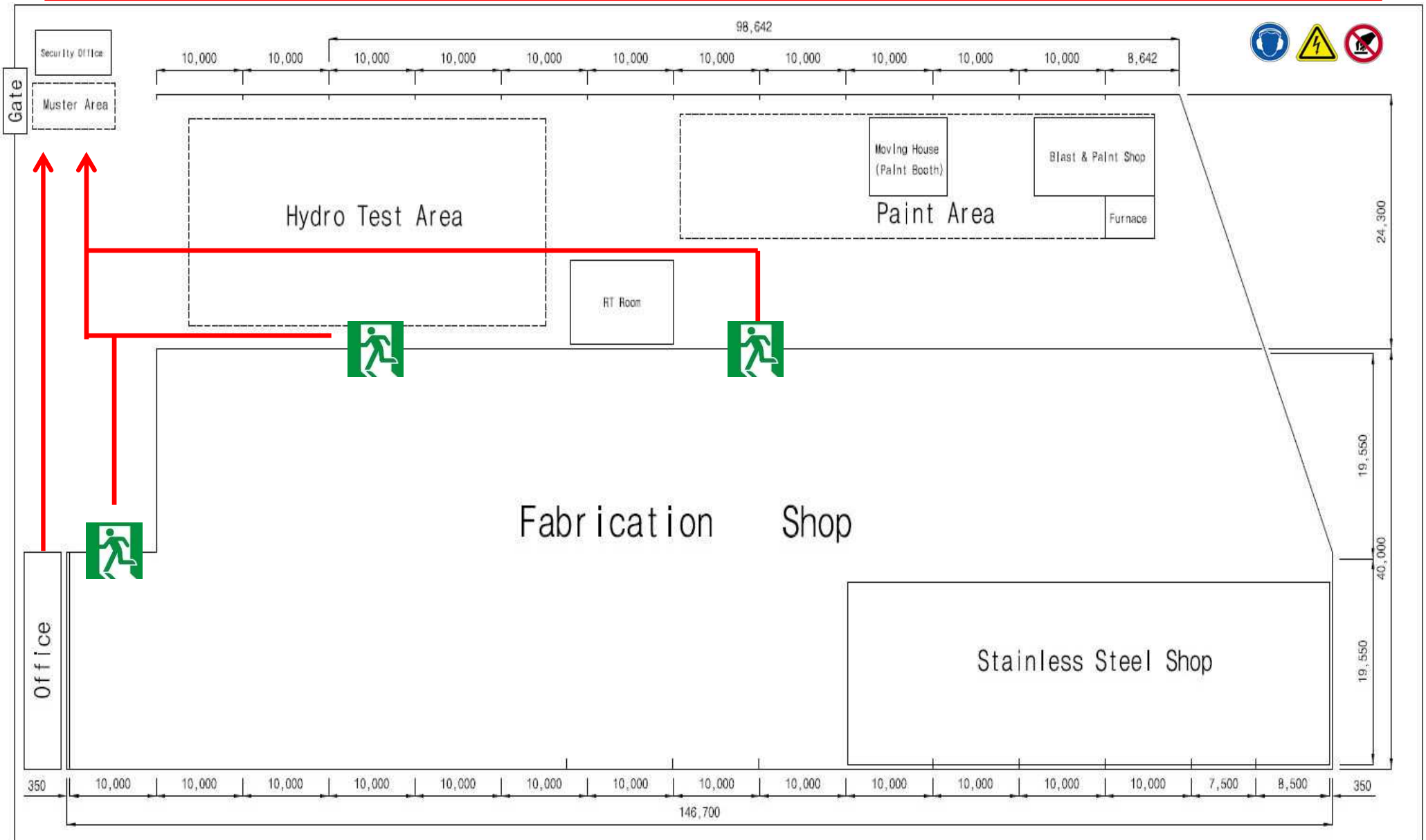

PRESENTATION

DAE
KYUNG
ENGINEERING &
CONSTRUCTION

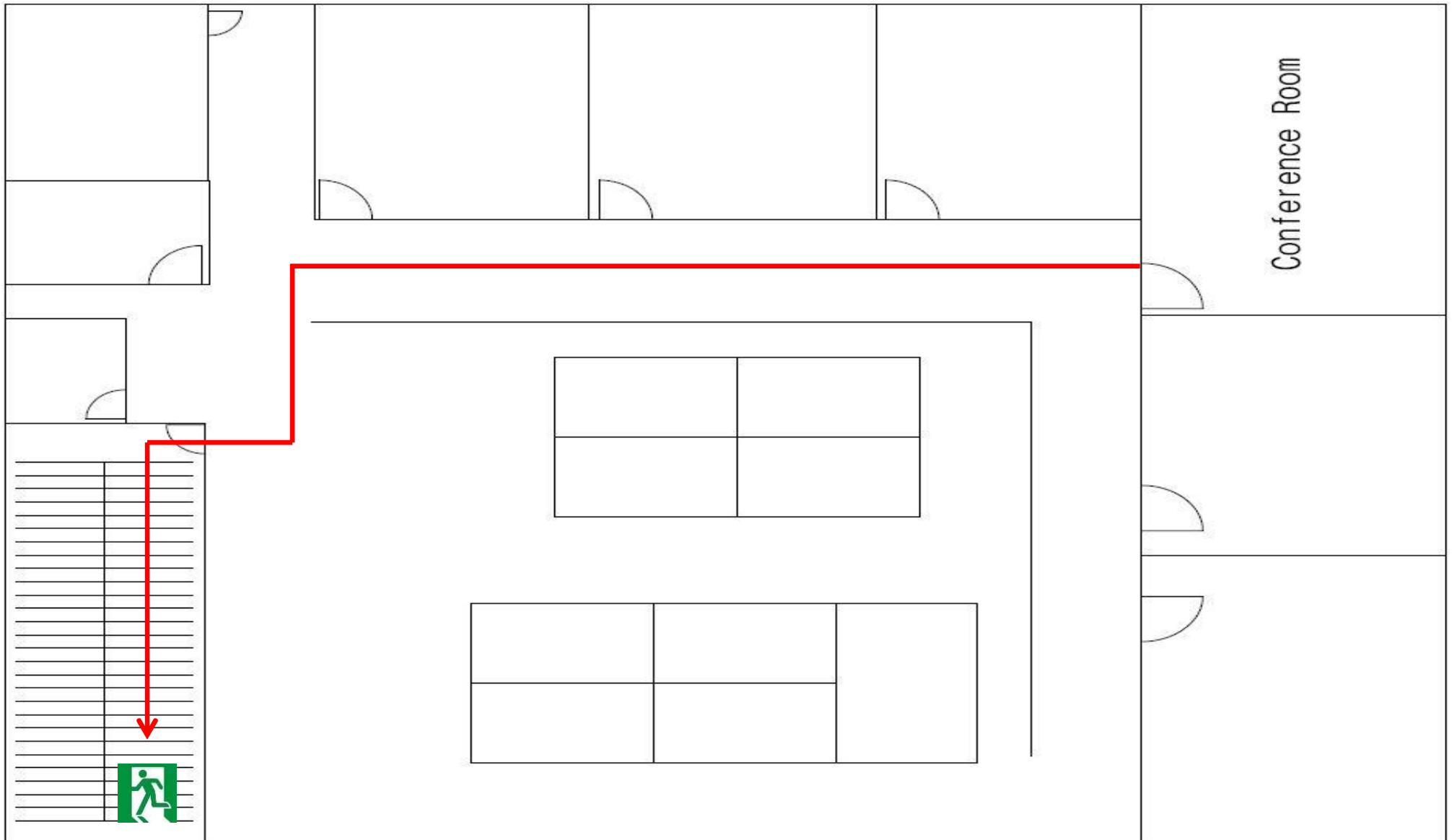
Safety Tips for Shop Tour

- 1 Keep the safety equipments & tools**
(안전 보호구를 착용하여 주십시오)
- 2 Getting familiar with the shop lay-out**
(공장 배치도를 숙지하여 주십시오)
- 3 Follow the safe route and check the nearest exits of emergency** (안전 통로로 이동하여 주시고, 비상구를 확인하여 주십시오)
- 4 Attention in the facility for safety and undisturbed for shop workers** (안전 통로에서 이탈 시에는 더욱 주의하여 주십시오)
- 5 Keep the close communication with the guider**
(이동 시에는 당사 직원과 동행하여 주십시오)
- 6 Please walk, do NOT run in the facility**
(공장 내에서 이동 중에는 뛰지 마십시오)

Emergency Exit and Shop Arrangement



Emergency Exit of Office (2nd Floor)



INDEX

- 1** **Company Profile**
- 2** **Shop Introduction**
- 3** **Certificates**
- 4** **Reference List**

COMPANY PROFILE

Annual Turnover

COMPANY PROFILE : History

• Dec. 2020	Awarded “7 Million Dollar Export Tower“
• Dec. 2019	Awarded “Million Dollar Export Tower”
• Feb. 2019	Authorized of ASME “R” Stamp
• Jul. 2017	Acquired for ISO 14001 & OHSAS 18001 Certificates(KGS)
• Jan. 2017	Acquired Promotion of Technology(INNO-BIZ) Innovation for SMEs Certificate
• Sep. 2016	Acquired of Promising Export Firm Certificate
• Mar. 2014	Bought New Shop of Head Office and No.1 Shop(Former SEAH E&T Shop)
• May 2013	Acquired License of Construction Work in Korea (Installation and Construction)
• Nov. 2010	Authorized of ASME “U” & “S” Stamp
• Sep. 2009	Acquired for ISO 9001 Certificate (KGS)
• Dec. 2008	Registered Corporation of Korea Venture Company (KIBO)
• Aug. 2007	Acquired License of High Pressure Gas Control Law in Korea
• Mar. 2006	Started Independence Business from DKME and Continued Sub-Contract of DKME
• Jan. 2004	Started Fabrication of Equipment Business and Sub-Contract of CURO(former Daekyung Machinery & Engineering Co., Ltd.(DKME)-No.2 Shop of DKEC is same with No.4 Shop of CURO

COMPANY PROFILE : Major Product Division

- **Oil & Gas Processing Equipments**
 - S&T Heat Exchanger, Reactor, Pressure Vessel, Column, Skid & Module, etc.
- **Maintenance, Construction and Installation**
 - Site Installation (Machine and etc.)
 - Piping Work
 - Steel Structure
 - Heat Exchanger Re-tubing
 - Repair & Maintenance
- **Design, Technical Service**
 - Detail Engineering (Drawing, Strength Calculation)
 - Inspection Service (UT, RT, MT, PT and Hydro Test)

COMPANY PROFILE : Employees (As of Jan. 2019)

• CEO	1	• Welder (Temporary & Sub-Contractor)	19
• Director	2	• Fitters (Temporary & Sub-Contractor)	17
• Project Management	1	• Helper (Temporary & Sub-Contractor)	18
• Design Dept.	5	Total of Temporary & Sub-Contractor	54
• QM Dept. (QC & QA)	6	* Max. Operation at Full Load	80
• Business Dept.	3		
• Fabrication Dept.	5		
• Procurement & Others	4		
• Other Shop Worker	7		
Total of Employees	34		

COMPANY PROFILE : Production Capacity

Weight Base	4,200 tons/yr (Average)
Pressure	500 bar
Wall Thickness	180 mm
Weight	250 tons
Diameter (I.D)	6,000mm
Length (TL-TL)	80,000 mm

COMPANY PROFILE : Handling Capacity & Sweet Spot

NO.	Description		Diameter (mm)	Length (mm)	Thickness (mm)	Weight (Ton)
1	Heat Exchanger	Max.	6,000	50,000	150	250
		Sweet Spot	1,000~3,000	30,000	10~100	150
2	Vessel Reactor	Max.	6,000	60,000	180	250
		Sweet Spot	1,000~4,000	50,000	10~80	150
3	Tower	Max.	5,000	80,000	150	250
		Sweet Spot	1,000~3,000	60,000	10~50	150

COMPANY PROFILE : Experienced and Capable Materials

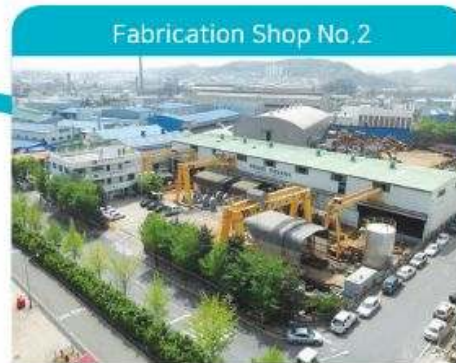
Carbon Steel	Mild CS, Killed CS, HIC Materials
Stainless Steel	Austenitic(3xx), Ferritic(4xx), Martensitic(4xx), Duplex, Super-Duplex
Low Alloy	Cr-Mo, Cr-Mo-V
Clad Steel	304/304L, 316/316L, 410SS, Monel And Inconel & Ti
Non-Ferrous Material	Copper Alloy, Nickel Alloy, Titanium Alloy
Origin of Raw Material	Europe, USA, Japan and Korea

SHOP INTRODUCTION : Shop Location



1 Fabrication Shop No.1

- Total Area : 13,000 m²
- Roofed Area : 6,800 m²



2 Fabrication Shop No.2

- Total Area : 6,000 m²
- Roofed Area : 1,700 m²



SHOP INTRODUCTION : Port Distance from shop



CERTIFICATIONS : Certificate & Design Capability

- Certificate & License

- Certification : ISO 9001, ISO 14001, OHSAS 18001
- ASME Code : ASME “U”, “S”, “R” and “NB” stamps

- Design Capability

- Auto CAD 2014) : Basic Design & detail Drawing
- PDS & PDMS Piping 3D DWG
- Strength Calculation
 - Compress (Ver. Latest) : U & U2 / TEMA
 - PVELITE (Ver. Latest) : Div. 1 & 2 / PD 5500
 - B-JAC (ver. Latest) : Strength Calculation
 - Nozzle Pro. : WRC 107
- Stress, Fatigue Analysis (NISA / USA)
- Thermal Calculation (HTRI / USA)

CERTIFICATIONS : ISO 9001, ISO 14001, OHSAS 18001



ISO 9001





ISO 14001



OHSAS 18000

CERTIFICATIONS : ASME U, S, R, NB Stamp

The American Society of Mechanical Engineers	 <p>U</p>	 <p>S</p>		<p>THE NATIONAL BOARD OF BOILER & PRESSURE VESSEL INSPECTORS</p> <p>Certificate of Authorization to Register</p> 		<p>THE NATIONAL BOARD OF BOILER & PRESSURE VESSEL INSPECTORS</p> <p>Certificate of Authorization</p> 
	<p>The named company is authorized by the American Society of Mechanical Engineers (ASME) for the scope of activities as defined in the ASME Boiler and Pressure Vessel Code, Section VIII, Division 1, Subpart N, and authority granted by this Certificate of Authorization set forth in the scope of this Certificate. The mark shall have been built and Pressure Vessel Code.</p> <p>COMPANY: Daeyung Engineering & Construction Co., Ltd.</p> <p>SCOPE: Manufacture of pressure vessels at the above location (The above location is limited to the location specified in the scope of this Certificate.)</p> <p>AUTHORIZED: [Signature]</p> <p>EXPIRES: [Date]</p> <p>CERTIFICATE NUMBER: [Number]</p>	<p>The named company is authorized by the American Society of Mechanical Engineers (ASME) for the scope of activities as defined in the ASME Boiler and Pressure Vessel Code, Section VIII, Division 1, Subpart N, and authority granted by this Certificate of Authorization set forth in the scope of this Certificate. The mark shall have been built and Pressure Vessel Code.</p> <p>COMPANY: Daeyung Engineering & Construction Co., Ltd.</p> <p>SCOPE: Manufacture and assembly of pressure vessels at the above location (The above location is limited to the location specified in the scope of this Certificate.)</p> <p>AUTHORIZED: [Signature]</p> <p>EXPIRES: [Date]</p> <p>CERTIFICATE NUMBER: [Number]</p>		<p>This is to certify that</p> <p>Daeyung Engineering & Construction Co., Ltd. 30, Yongjam-ro 40beon-gil Nam-gu, Ulsan 44783 Republic of Korea</p> <p>is authorized to apply the "NB" mark on pressure vessels or other pressure retaining components in accordance with the provisions of the National Board Inspection Code and NB-415, Accreditation of "NB" Repair Organizations.</p> <p>The scope of Authorization is limited to the following:</p> <p>ASME Designator(s): U-1, U-2, U-3, U-4, U-5, U-6, U-7, U-8, U-9, U-10, U-11, U-12, U-13, U-14, U-15, U-16, U-17, U-18, U-19, U-20, U-21, U-22, U-23, U-24, U-25, U-26, U-27, U-28, U-29, U-30, U-31, U-32, U-33, U-34, U-35, U-36, U-37, U-38, U-39, U-40, U-41, U-42, U-43, U-44, U-45, U-46, U-47, U-48, U-49, U-50, U-51, U-52, U-53, U-54, U-55, U-56, U-57, U-58, U-59, U-60, U-61, U-62, U-63, U-64, U-65, U-66, U-67, U-68, U-69, U-70, U-71, U-72, U-73, U-74, U-75, U-76, U-77, U-78, U-79, U-80, U-81, U-82, U-83, U-84, U-85, U-86, U-87, U-88, U-89, U-90, U-91, U-92, U-93, U-94, U-95, U-96, U-97, U-98, U-99, U-100</p> <p>Issue Date: [Date]</p> <p>This Certificate of Authorization to Register is valid as long as the manufacturing organization maintains a valid Certificate of Authorization issued by the American Society of Mechanical Engineers.</p> <p>Executive Director: [Signature]</p>		<p>This is to certify that</p> <p>Daeyung Engineering & Construction Co., Ltd. 30, Yongjam-ro 40beon-gil Nam-gu, Ulsan 44783 Republic of Korea</p> <p>is authorized to use the R Symbol in accordance with the provisions of the National Board Inspection Code and NB-415, Accreditation of "R" Repair Organizations.</p> <p>All activities within the scope of this Authorization shall be controlled by the above location.</p> <p>The scope of this Authorization is limited to:</p> <p>Metallic Repairs and Alterations At Shop and Field Locations</p> <p>Certification Number: 11093</p> <p>Issue Date: February 26, 2019</p> <p>Expiration Date: February 25, 2022</p> <p>Executive Director: [Signature]</p>

REFERENCE LIST : Shell & Tube Heat Exchanger



- ITEM : HOT COMBINED FEED EXCHANGER
- **SPECIAL FEATURE : INNER BORE WELDING**
- CUSTOMER : HYOSUNG CORP.
- PROJECT : DH-2
- MATERIAL : A240-TP304 / A213-TP304
- IZE : 22T x ID2,350 x 20,600L
- WEIGHT : 148,400kg
- BUILT YEAR : 2013



- ITEM : HOT COMBINED FEED EXCHANGER
- **SPECIAL FEATURE : INNER BORE WEIDING**
- CUSTOMER : HYOSUNG CORP.
- PROJECT : HCFE REVAMP DH-1
- MATERIAL : A240-TP304 / A213-TP304
- SIZE : 22T x 1,650 ID x 17,700 L
- WEIGHT : 58,000kg
- BUILT YEAR : 2005

REFERENCE LIST : Shell & Tube Heat Exchanger



- ITEM : HYBIRD STYLE CATALYST COOLER
- CUSTOMER : SK ENERGY
- PROJECT : #2 FCC REVAMP PJT
- MATERIAL : A516-Gr.70+N / A213-TP T11
- SIZE : 55T x ID2,440 x 14,000L
- WEIGHT : 133,000kg
- BUILT YEAR : 2012



- ITEM : CATALYST COOLER BUNDLE
- CUSTOMER : SK ENERGY
- PROJECT : #2 FCC REVAMP PJT
- MATERIAL : A213-TP T11
- BUILT YEAR : 2012

REFERENCE LIST : Shell & Tube Heat Exchanger



- ITEM : R-4401 GAS COOLER
- CUSTOMER : HYOSUNG VINA CHEMICALS
- PROJECT : PP4
- MATERIAL : SA516-70
- SIZE : 14T x ID1,500 x 17,944L
- WEIGHT : 42,000kg
- BUILT YEAR : 2019



- ITEM : DPC PURIFICATION TOWER REBOILER
- CUSTOMER : LOTTE CHEMICAL /
HYUNDAI ENG'G
- PROJECT : HC2
- MATERIAL : SA516-70 / SA213-TP316L
- SIZE : 30T x ID1,690 x 4,100L
- WEIGHT : 28,800kg
- BUILT YEAR : 2018

REFERENCE LIST : Shell & Tube Heat Exchanger



- ITEM : HYDROGEN DISCHARGE CONDENSER
- CUSTOMER : S-OIL /
DAELIM INDUSTRIAL
- PROJECT : S
- MATERIAL : SA516-70N / SA789-S32750
- SIZE : 32T x ID1,600 / 2,700 x 6,000L
- WEIGHT : 42,400kg
- BUILT YEAR : 2016



- ITEM : CUM PURIFICATION COLUMN REBOILER
- CUSTOMER : HANWHA TOTAL
- PROJECT : PP
- MATERIAL : SA516-70N / SA213-TP304
- SIZE : 13T/28T x ID1,370 x 5,000L
- WEIGHT : 50,500kg
- BUILT YEAR : 2017

REFERENCE LIST : Shell & Tube Heat Exchanger



- ITEM : DEPROPANIZER CONDENSER
- CUSTOMER : HYOSUNG VINA CHEMICAL
e-TEC
- PROJECT : OL1
- MATERIAL : SA516-70N / SA179
- SIZE : 18T x ID1,700 x 9,600L
- WEIGHT : 53,000kg
- BUILT YEAR : 2020



- ITEM : C3 SPLITTER REBOILER
- CUSTOMER : HYOSUNG VINA CHEMICAL
e-TEC
- PROJECT : OL1
- MATERIAL : SA516-70N / SA179
- SIZE : 21T x ID2,500 x 12,000L
- WEIGHT : 154,000kg
- BUILT YEAR : 2020

REFERENCE LIST : Shell & Tube Heat Exchanger



- ITEM : EFFLUENT TRIM COOLER
- CUSTOMER : HYOSUNG VINA CHEMICAL
e-TEC
- PROJECT : OL1
- MATERIAL : SA516-70 / SA179
- SIZE : 18T x ID2,350 x 8,500L
- WEIGHT : 50,100kg
- BUILT YEAR : 2020



- ITEM : PROPYLENE CONDENSER
- CUSTOMER : HYOSUNG VINA CHEMICAL
e-TEC
- PROJECT : OL1
- MATERIAL : SA516-70N / SA179
- SIZE : 31T x ID2,900 x 12,300L
- WEIGHT : 182,800kg
- BUILT YEAR : 2020

REFERENCE LIST : Shell & Tube Heat Exchanger



- ITEM : REGENERATION NITROGEN HEATER
- SPECIAL FEATURE : ELECTRIC HEATER
- CUSTOMER : HYUNDAI CHEMICAL
DIC / WATLOW
- PROJECT : HPC
- MATERIAL : SA312-TP304
- SIZE : 10" x SCH.STD x 4,250L
- WEIGHT : 930kg
- BUILT YEAR : 2020



- ITEM : DECOKING COOLER
- CUSTOMER : HYOSUNG VINA CHEMICAL
- PROJECT : OL1
- MATERIAL : SA516-70 / SB168-N0660 / SB167-N06600
- SIZE : 6T x ID1,916 x 5,215L
- WEIGHT : 7,000kg
- BUILT YEAR : 2020

REFERENCE LIST : Shell & Tube Heat Exchanger



- ITEM : PROPYLENE CONDENSER
- CUSTOMER :HYOSUNG VINA CHEMICAL
e-TEC
- PROJECT : PP5
- MATERIAL : SA516-70 / SA179
- SIZE : 20T x ID1,800 x 7,200L
- WEIGHT : 46,000kg
- BUILT YEAR : 2020



- ITEM : 1ST RX CYCLE GAS COOLER
- CUSTOMER : HANHWA TOTAL / HANHWA ENC
- PROJECT : PP4
- MATERIAL : SA516-70N / SA213-TP304/304
- SIZE : 30T x ID1,930 x 10,516L
- WEIGHT : 71,600kg
- BUILT YEAR : 2020

REFERENCE LIST : Steam Drum



- ITEM : CYCLE GAS COOLER
- CUSTOMER : HYOSUNG CORPORATION
- PROJECT : PP-II CAPA. UP
- MATERIAL : SA516-GR.70-HIC / SA179
- SIZE : 12T x ID1,110 x 11,890L
- WEIGHT : 42,400kg
- BUILT YEAR : 2016



- ITEM : WASTE HEAT BOILER
- CUSTOMER : SK ENERGY
- PROJECT : #1 FCC REVAMP PJT
- MATERIAL : SA516-Gr.70+N / SA192
- SIZE : 45T x ID1,803 x 12,000L
/ 30T x ID1,280 x 7,000L
- WEIGHT : 47,607kg
- BUILT YEAR : 2013

REFERENCE LIST : Steam Drum



- ITEM : DECOKE DRUM
- CUSTOMER : KBR / GS CALTEX
- PROJECT : MFC
- MATERIAL : SA516-70
- SIZE : 15T x ID3,934 x 15,577L
- WEIGHT : 60,070kg
- BUILT YEAR : 2019



- ITEM : HIGH PRESSURE BLOW DOWN VESSEL
- CUSTOMER : HYOSUNG VINA CHEMICALS
- PROJECT : PP4
- MATERIAL : SA516-70N + S5
- SIZE : 54T x ID4,800 x 16,500L
- WEIGHT : 122,300kg
- BUILT YEAR : 2019

REFERENCE LIST : Pressure Vessel



- ITEM : SEPARATOR OF HIGH PRESSURE
- CUSTOMER : SK ENERGY
- PROJECT : HOU CHPS PROJECT
- MATERIAL : A516-Gr.70+Stainless347 OVERLAY
- SIZE : (137+5)T x 2,300D x 8,800L
- WEIGHT : 60,000kg
- BUILT YEAR : 2010



- ITEM : STEAM DRUM (HEAVY OIL)
- CUSTOMER : HYUNDAI OIL BANK / KBR
- PROJECT : HPC
- MATERIAL : SA516-70N
- SIZE : 106T x 1,829 ID x 7,620L
- WEIGHT : 55,000kg
- BUILT YEAR : 2020

REFERENCE LIST : Reactor



- ITEM : REACTOR TRAIN A/B/C
- CUSTOMER : BANGKOK SYNTHETICS / SUMITOMO HEAVY IND.
- PROJECT : RATEX
- MATERIAL : SA516-Gr.70+AS204-316 CLAD
- SIZE : (32+3)T x ID2,700 x 6,896L
- WEIGHT : 52,100kg
- BUILT YEAR : 2015



- ITEM : REACTOR
- SPECIAL FEATURE : AGIATOR MOUNTING
- CUSTOMER : SUMITOMO SEIKA / SUMITOMO HEAVY IND.
- PROJECT : POYMERS
- MATERIAL : SA516-Gr.70 + A240-304 CLAD
- SIZE : (12+3)T x ID3,250 x 4,305L
- WEIGHT : 20,600kg
- BUILT YEAR : 2015

REFERENCE LIST : Tower / Column



- ITEM : MSR REACTOR
- CUSTOMER : SUMITOMO HEAVY INDUST.
- PROJECT : CCRY12
- MATERIAL : SA516-70 + SB575 N06022
- SIZE : 12+4T x ID1,900 x 4,980L
- WEIGHT : 13,000kg
- BUILT YEAR : 2019



- ITEM : R-500-1 REACTOR
- CUSTOMER : SUMITOMO HEAVY INDUST.
- MATERIAL : SA516-70 + 316L CLAD
- SIZE : (55+3)T x ID1,190 x 2,550L
- WEIGHT : 14,200kg
- BUILT YEAR : 2018

REFERENCE LIST : Tower / Column



- ITEM : NO2. AMINE REGENERATOR
- CUSTOMER : SK ENERGY
- MATERIAL : SA516-70 + SA240-304L CLAD / SA516-70 + HIC
- SIZE : (13+3)T x ID2,700 x 24,400L
- WEIGHT : 65,000kg
- BUILT YEAR : 2014



- ITEM : LPG AMINE TREATER
- CUSTOMER : HYUNDAI OIL BANK
- MATERIAL : SA516-70N + HIC
- SIZE : 35T x ID1,800 x 24,900L
- WEIGHT : 50,000kg
- BUILT YEAR : 2019

REFERENCE LIST : Tower / Column



- ITEM : SOLVENT REFINING COLUMN-B
- CUSTOMER : HANWHA TOTAL
- MATERIAL : SA516-70
- SIZE : 11T x ID1,000 x 22,190L
- WEIGHT : 11,400kg
- BUILT YEAR : 2016



- ITEM : T-102L TOWER 1SET
- CUSTOMER : KOREA ENGINEERING PLASTICS
- MATERIAL : SA240-304
- SIZE : 9T x ID2,700 x 20,960L
- WEIGHT : 24,400kg
- BUILT YEAR : 2011

REFERENCE LIST : Tower / Column



- ITEM : No.2 AMINE REGENERATOR
- SPECIAL FEATURE : WET H₂S / AMINE SERVICE
- CUSTOMER : SK ENERGY
- PROJECT : HOU CHPS PROJECT
- MATERIAL : SA516-Gr.70+SA240-304L
SA516-Gr.70N+HIC
- SIZE : (13+3)T x ID3,700 x 24,370L
- WEIGHT : 65,000kg
- BUILT YEAR : 2014



- ITEM : L-CO₂ STORAGE DRUM
- CUSTOMER : DEOKYANG
- PROJECT : L-CO₂ PJT
- MATERIAL : SA516-Gr.70N+S5
- SIZE : 36T x ID4,000 x 41,500L
- WEIGHT : 183,550kg
- BUILT YEAR : 2015

DKEC Experience List (Special Material)

NO	CUSTOMER	CLIENT (LICENSE)	LOCATION	PROJECT	PROCESS	ITEM	SIZE (TH'K)	SIZE (I.D - LEN.)	MATERIAL (SHELL)	MATERIAL (TUBE)	Q'TY	YEAR (DEL.) (JOB NO.)
DUPLEX												
1	DAELIM	S-OIL	KOREA	RUC	-	H/EX	32	2700-4877	SA240-TP S32205	SA789-TPS32205	10	2016 (6036)
2	SKE	SKE	KOREA	TA	-	H/EX BUNDLE	-	-	A240-S32205	SA789-TPS32205	21	2015 (5104)
3	GS CALTEX	GS CALTEX	KOREA	TA	REFINERY	H/EX	12	1800-9000	SA182-F53	SA789-TPS32750	6	2015 (5066)
4	KEP	KEP	KOREA	DOL	ENG. PLASTIC	TOWER (COLUMN)	12	1,000-18,000	SA240-TP S32750 / SA240-TP316L	-	2	2013 (3012)
5	KEP	KEP	KOREA	KEP	ENG. PLASTIC	H/EX	-	1,353-2,300 (BUNDLE)	NAS74	SA213-TP S32750	2	2012 (11-068)
⋮												
LOW ALLOY												
1	S-OIL	S-OIL	KOREA	TA	-	H/EX	12	800-6,100	A182-F6a cl.1	A268-TP405	1	2017 (7026)
2	SKIPC	SKIPC	KOREA	TA	FEX310,370	H/EX BUNDLE	13	1350-6100	A387-T5 CL.2	A213-T5	5	2016 (6024)
3	SKE	SKE	KOREA	2016 T/A	-	H/EX	-	1,350-7,730 (Tube Bundle)	SA182-F5	SA213-TP T5	62	2015 (095,096,104)
4	GS CALTEX / DKME	GS CALTEX	KOREA	ENERGY OPTIMIZATION	REFINERY	H/EX	25	1,230-8,327	SA387-GR.5 CL.2	SA213-TP T5	2	2014 (A304)
5	SK LUBRICANTS	SKI	KOREA	H-PJT	HBO	VESSEL	27.2	(24+3.2)-1,900-9,820	SA387-GR.22+ A240- TP347SS CLAD	-	1	2012 (11-071)
⋮												

DKEC Experience List (Special Material)

NO	CUSTOMER	CLIENT (LICENSE)	LOCATION	PROJECT	PROCESS	ITEM	SIZE (TH'K)	SIZE (I.D - LEN.)	MATERIAL (SHELL)	MATERIAL (TUBE)	Q'TY	YEAR (DEL.) (JOB NO.)
NON-FERRUS												
1	ISU ENC	ISU CHEM.	KOREA	KERO STORAGE		H/EX. & PV	10	304.8-1,800	ALLOY20 SB-464	ALLOY20 SB-468	2	2019 (EC9016)
2	TISCO	KEC	JAPAN			REACTOR	16	(12+4)-1,900-4,980	SA516-70+SB575 N0600 CLAD	-	1	2018 (EC8101)
3	HANWHA TOTAL	HANWHA TOTAL	KOREA	-	-	VESSEL	5	1510-2331	ALUMINUN AL5454	-	10	2017 (EC7037)
4	WATLOW	SK MATERIALS	KOREA	SS	-	VESSEL	10	8" - 4000	B163-N0600	-	1	2017 (7036)
5	SKE	SKE	KOREA	TA	-	H/EX BUNDLE	-	-	B240-S32205	SA789-TPS32205	21	2015 (5104)
6	WATLOW	TAEKWANG	KOREA	CCR	-	VESSEL	10	20" - 2800	B424-N0800H	-	2	2017 (7023)
7	SKE	SKE	KOREA	#1 FCC	#1 FCC	H/EX BUNDLE	15	500-4877	B424-N08825	B163-N08825	2	2016 (6086)
8	S-OIL	S-OIL	KOREA	TA	-	H/EX	12	1500-6,100	B424-N08825	B163-N08825	2	2016 (6023)
9	KEP	KEP	KOREA	K2Q-1	K2Q-1	TOWER (COLUMN)	9	2,400-17,750	B575-N10276	-	5	2012 (2007)
10	HYOSUNG	HYOSUNG	KOREA	PP	PP	VESSEL	6	1,200-4,410	SA240-316L /SB444-N06625	-	1	2015 (5069)
11	HYOSUNG	HYOSUNG	KOREA	MAINTEN.	-	H/EX COVER	58	(52+4)-OD2102	SA266-GR.4+SB265-2 LINING	-	1	2015 (15-5040)
12	GS CALTEX	GS CALTEX	KOREA	SWS	SWS	H/EX	16	(13+3)-1,360-5,400	SA516-60N +SB424-N08825	-	2	2016 (6012)
⋮												

Thank you.

